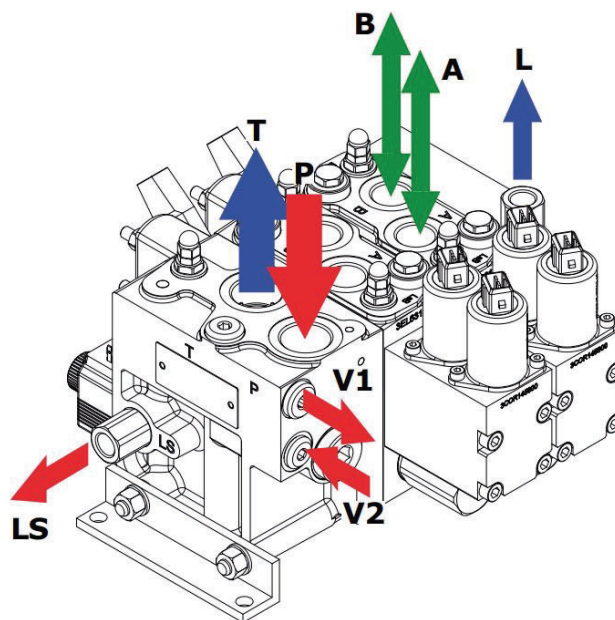


DPC130 Series

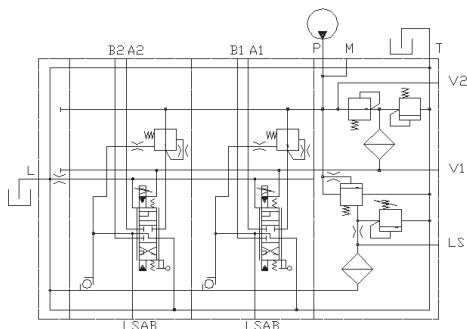
This sectional valve is normally used for mobile machinery, agricultural machines, cranes, drilling rigs and compactors. The spools have various configurations including double-acting, single-acting, 4th position float control and are pre-set for various flow rates.

FEATURES:

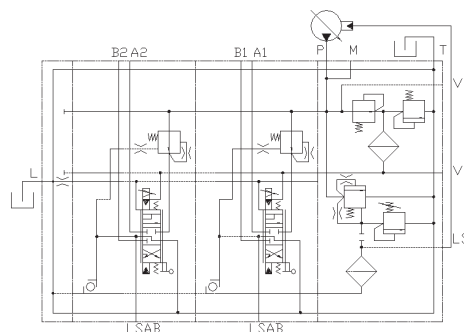
- Load-independent flow control.
- Internal pilot oil supply built into inlet cover.
- Options for electrical LS unloading valve.
- Interchangeable spools with a range of flow options.
- A wide variety of service port valves.
- Available manual, hydraulic and electro-hydraulic proportional spool control kits.
- Available with compensated or non compensated working sections.



Open Circuit Fixed Delivery Pump



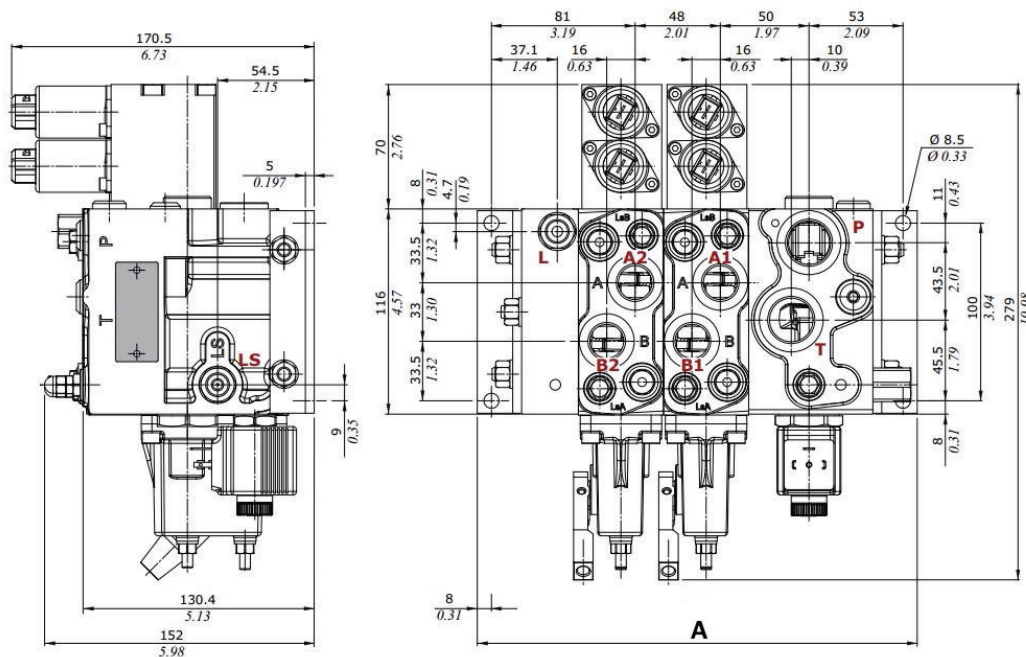
Closed Circuit Load Sense Pump



PROPORTIONAL VALVES

DPC130 Series

Proportional directional control valves with with pre-compensated sections and load sensing. These valves are suitable for load sensing variable displacement pumps or fixed displacement pumps. Available with manual handle, oil pilot or electro-proportional controls.



Inlet Flow L/min	Work Port Non-Comp L/min	Work Port Comp. L/min	Max. Pressure bar	Max. Back Pressure bar	Leakage @ 100 bar cm ³ /min	Tiebolt Torque Nm	Ports BSPP			
							P, T	A, B	LS	Drain
150	130	100	315	25	16	30	3/4"	1/2"	1/4"	1/4"

Filtration required: 18/15 ISO4406

Viscosity Range = 12 - 400cSt

Type	No. of Spools	Dim A (mm)
DPC130-1	1	200
DPC130-2	2	248
DPC130-3	3	296
DPC130-4	4	344
DPC130-5	5	392

Type	No. of Spools	Dim A (mm)
DPC130-6	6	440
DPC130-7	7	488
DPC130-8	8	536
DPC130-9	9	584
DPC130-10	10	632

Pricing includes solenoid control and manual override, cylinder spool, spring-centred, load sense circuit, relief valve and compensated sections

Options		
Type	Part Number	Description
BR11	5FIA631301	Inlet-open centre c/w relief valve
BR21	5FIA631300	Inlet-closed centre c/w relief valve
1	3CU4010010	Spool A & B closed
2H	3CU4025010	Spool A & B partially open to tank
3	3CU4031025	Spool single acting on A
5	3CU4041025	Spool 4th position float
ELP	EC08M/10PB	Unloader Sol. Op. 12VDC(24VDC)
8EZ3T4-12VDC	5V08130872	Proportional Sol. Op. 12VDC
8EZ3T4-24VDC	5V08130873	Proportional Sol. Op. 24VDC
8IM	5V08130800	Hydraulic pilot - proportional
U1/U2	5KIT330100	Port relief & anti-cavitation
8	5V08130000	Spool position - spring centre
7FT	5V07130000	Spool position - friction control
13	5V13130000	Float 4th position (manual)
13ZR3	5V13130900	As Type 13 for proportional sol.

Flow Options	
Flow Symbol	Range L/min
O	0-10
V	0-25
Q	0-40
S	0-60
N	0-80
P	0-100