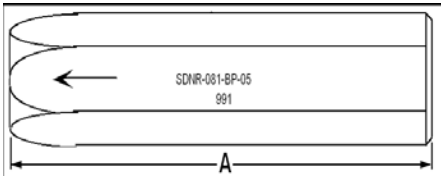


CHECK VALVES

SDNR Series

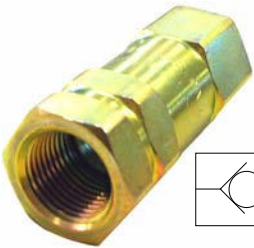


Part No.	Thread	Rated Flow Delta P at 2 BAR		Max. Pressure.		Cracking Pressure **		Dimensions	
	BSPP	L/Min	US gpm	BAR	psi	05	65	A	HEX
SDNR-041-BP-**	1/4"	13	3.5	415	6160	5 (PSI) (.34 BAR)	65 (PSI) (4.4 BAR)	66.7	22.2
SDNR-061-BP-**	3/8"	25	6.5	300	4350			79.4	24.0
SDNR-081-BP-**	1/2"	60	16	300	4350			98.4	28.5
SDNR-121-BP-**	3/4"	120	32	250	3625			104.0	38.1
SDNR-161-BP-**	1"	200	54	245	3550			127.0	47.6
SDNR-201-BP-**	1 1/4"	300	80	225	3260			152.4	55.0
SDNR-241-BP-**	1 1/2"	400	108	200	2900			175.0	65.0
SDNR-321-BP-**	2"	700	187	130	1880			222.3	75.0

NB: Replace ** in part number with cracking pressure

Other cracking pressures available on request

CHECK VALVES



Part No.	Thread	Rated Flow delta P@2 BAR		Max. Pressure.		Cracking Pressure
	BSPP	L/Min	US GPM	BAR	PSI	
VU-14F-14F	1/4"	30	7.9	415	6160	0.35 BAR (5 PSI)
VU-38F-38F	3/8"	45	11.9	300	4350	
VU-12F-12F	1/2"	68	18	300	4350	
VU-34F-34F	3/4"	162	42.8	250	3625	
VU-1F-1F	1"	315	83.3	245	3552	
VU-114F-114F	1-1/4"	290	76.7	225	3262	
VU-112F-112F	1-1/2"	763	207	200	2900	
VU-2F-2F	2"	760	201	130	1885	

Other spring cracking pressures available on request: suffix C = 14.5psi, L = 65psi, U = 116psi (for sizes 1/2" - 1-1/4"). These check valves are also available in stainless steel.

CROSS PORT CHECK VALVES

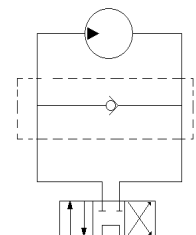


These valves are ideally suited for unidirectional motor applications when using a control valve that has closed work ports in the neutral position. The cross port check valve permits the centrifugal energy of the driven component to dissipate harmlessly.

The port centres permit direct fitment via adaptors to **Torqmotor®** motors or they can be line mounted to suit any motor application.

The direction of the check valve can be changed by swapping the end plugs.

Applications include rotary hoes, rotary brooms, post hole diggers, etc.



Part No.	Direct mounts via adaptors to:	Port Size
SBPC-141-UN	Ross MB/ME & MG/MF Charlynn H & S series Maxma MAPH & MARS	7/8"UN'O'
SBPC-141-UN-2K	Charlynn 2000 Series	7/8"UN'O'