

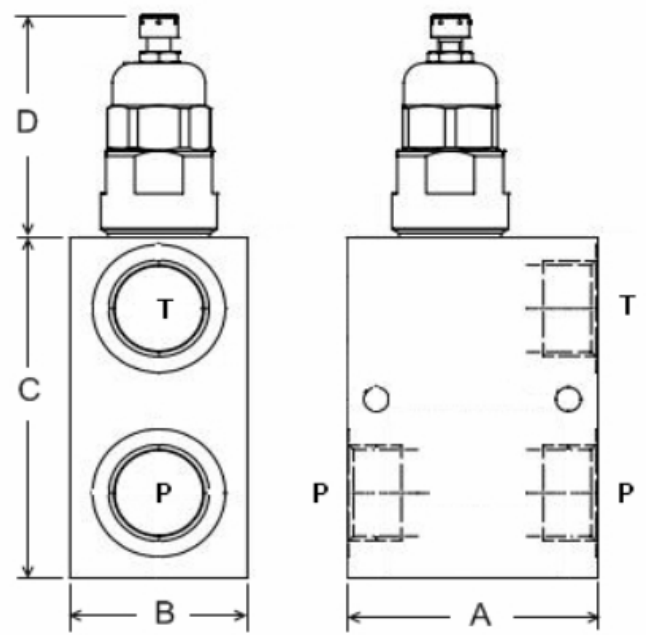
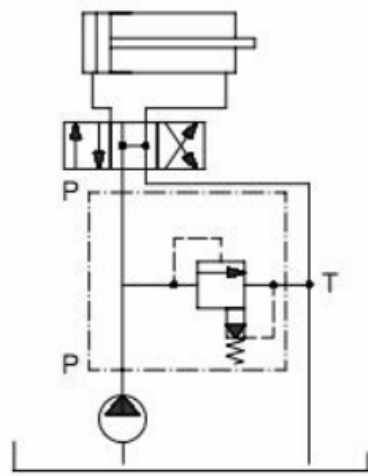
RELIEF VALVES

PILOT OPERATED

Aluminium body

NB: Steel bodied units available upon request - add suffix AC

Spring Range Options	
Code	bar
TB	5-40
TS	20-400



Part No. (with TS Spring option)	Ports BSPP	M.W.P. BAR Alum	M.W.P. BAR Steel	Dim. (mm)				Nom Flow L/min
				A	B	C	D	
VMPP/B/L10-12/TS.W.V	1/2"	210	350	70	35	78	74.3	70
VMPP/B/L20-34/TS.W.V	3/4"			70	50	100	77.5	120
VMPP/B/L20-100/TS.W.V	1"			85	60	120	77.5	120
VMPP/B/L45-114/TS.W.V	1-1/4"	250	N/A	100	70	135	94.5	250