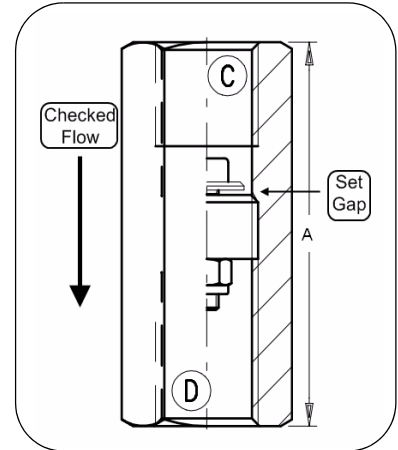
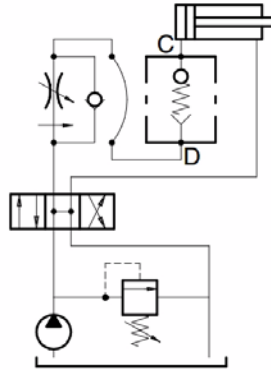


HOSE BURST CHECK VALVES

Steel body

This valve is especially recommended for use as a safety device for cylinders against a possible hose break. Free flow is permitted from D to C while a limited flow is permitted in the opposite direction. If a hose break occurs the outlet flow from the cylinder exceeds the check valve setting and stops the flow, thus preventing further movement of the cylinder.

The valve gap must be set using feeler gauges to suit the closure flow rate. See the charts below. A flow restrictor, such as that depicted in the circuit diagram, must be installed on the down stream side preferably at the directional control valve. This will restrict the flow to within the operating flow parameters.



Part No.	Ports BSPP	Max. Pressure BAR	Dim. (mm)		Max. Flow L/min
			A		
VB/F-14	1/4"	350	48	25	
VB/F-38	3/8"		52	50	
VB/F-12	1/2"		60	80	
VB/F-34	3/4"		72	150	

Gap Setting Charts

Set gap to suit closure flow rate required. This setting must be above the normal operating flow rate.

