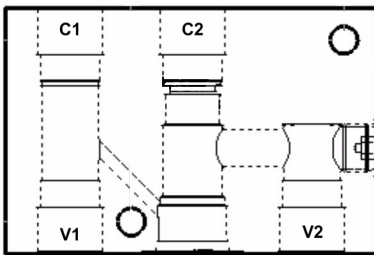
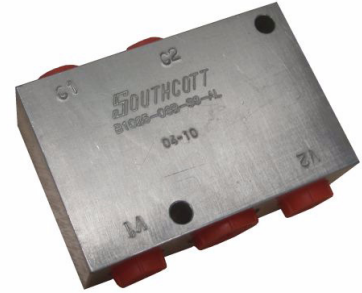


BODIES TO SUIT CARTRIDGE VALVES

NB: Aluminium bodies rated to 210 BAR (3000 PSI)
Steel bodies rated to 345 BAR (5000 PSI)

INLINE PORTED BODIES

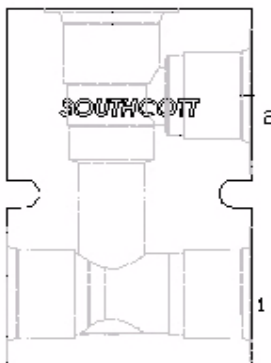
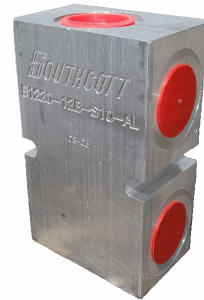
Suit single counter-balance & single pilot operated check valve applications.
Use COMMAND CONTROLS counter-balance cartridges (CBPA)
or pilot operated check valve (POCI) cartridges.
In and out ports are oriented in the same plane to facilitate inline mounting.



Part No.	Cavity	Ports	Material
B1025-06B-S8-AL	1025	3/8" BSPP	Aluminium
B1025-08B-S8-AL	1025	1/2" BSPP	Aluminium
B1025-08B-S8-ST	1225	1/2" BSPP	Steel

THROUGH PORT RELIEF BODIES

2 way through port
Suit relief valve application
Use COMMAND CONTROLS pilot operated type **RVPS** or direct acting **RVDI** cartridges



Part No.	Cavity	Ports	Material
B0820-09U-S10-AL	0820	9/16" UNO	Aluminium
B0820-06B-S10-AL	0820	3/8" BSPP	Aluminium
B1020-14U-S10-AL	1020	7/8" UNO	Aluminium
B1020-08B-S10-AL	1020	1/2" BSPP	Aluminium
B1220-17U-S10-AL	1220	1 1/16" UNO	Aluminium
B1220-12B-S10-AL	1220	3/4" BSPP	Aluminium
B0820-06B-S10-ST	0820	3/8" BSPP	Steel
B1020-08B-S10-ST	1020	1/2" BSPP	Steel
B1220-12B-S10-ST	1220	3/4" BSPP	Steel