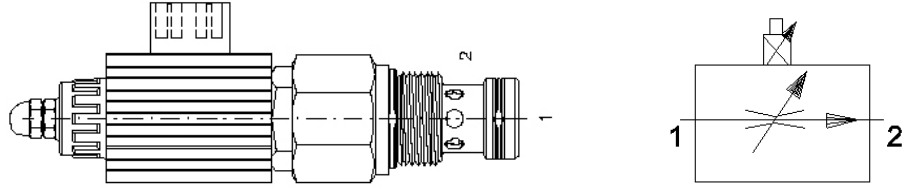


PROPORTIONAL FLOW CONTROL

2 Port Pressure Compensated

EPFI
EPFC



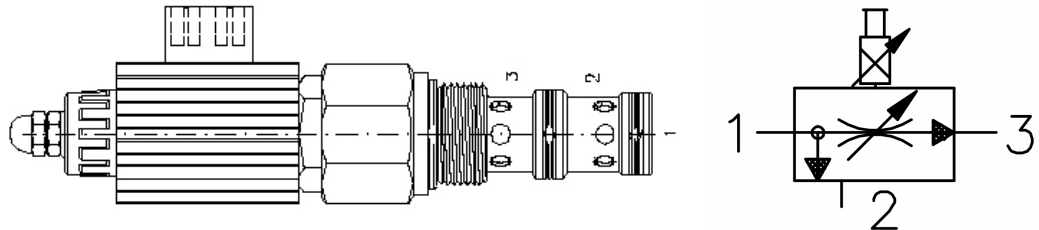
Part No.	Flow Range (L/min)	Cavity
EPFI-08-N-C-03-0MXXDG	0-11	0820
EPFI-10-N-C-04-0MXXDG	0-15	1020
EPFI-10-N-C-08-0MXXDG	0-30	1020
EPFI-12-N-C-05-0MXXDG	0-19	1220
EPFI-12-N-C-10-0MXXDG	0-38	1220
EPFI-12-N-C-15-0MXXDG	0-57	1220
EPFC-16-N-05-0MXXDG	0-19	1620
EPFC-16-N-10-0MXXDG	0-38	1620
EPFC-16-N-15-0MXXDG	0-57	1620
EPFC-16-N-20-0MXXDG	0-76	1620

AVAILABLE IN 12V DC OR 24V DC REPLACE 'XX' IN THE PART NUMBER WITH THE REQUIRED VOLTAGE.
IN THE EVENT OF POWER FAILURE, VALVE WILL CLOSE.

PROPORTIONAL FLOW CONTROL

3 Port Bypass Type Pressure Compensated

EPFB
EPFD



NB: Port 3 is the priority port. Port 2 can be directed to a secondary circuit or to tank.

Part No.	Max. Input Flow (L/min)	Reg. Flow Range (L/min)	Cavity
EPFB-08-N-C-03-0MXXDG	19	0-11	0830
EPFB-10-N-C-04-0MXXDG	38	0-15	1030
EPFB-10-N-C-08-0MXXDG	38	0-30	1030
EPFB-12-N-C-05-0MXXDG	98	0-19	1230
EPFB-12-N-C-10-0MXXDG	98	0-38	1230
EPFB-12-N-C-15-0MXXDG	98	0-57	1230
EPFD-16-N-05-0-M-XXDG	130	0-19	1630
EPFD-16-N-10-0-M-XXDG	130	0-38	1630
EPFD-16-N-15-0-M-XXDG	130	0-57	1630
EPFD-16-N-20-0-M-XXDG	130	0-76	1630

AVAILABLE IN 12V DC OR 24V DC - REPLACE 'XX' IN THE PART NUMBER WITH THE REQUIRED VOLTAGE.
IN THE EVENT OF POWER FAILURE, VALVE WILL CLOSE

For line mount bodies to suit the above cartridges refer to section "J". Use the cavity size to select the correct body type then choose the desired port size.