

# LINE MOUNT VALVES

## SINGLE COUNTER-BALANCE VALVES

### VOSL/N1116 Series

### VOSL/R1116 Series

### VOSL/V1116 Series

Steel body

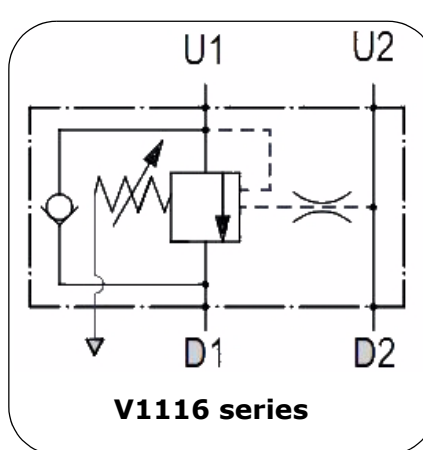
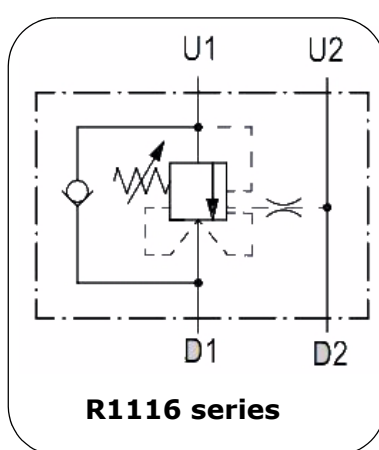
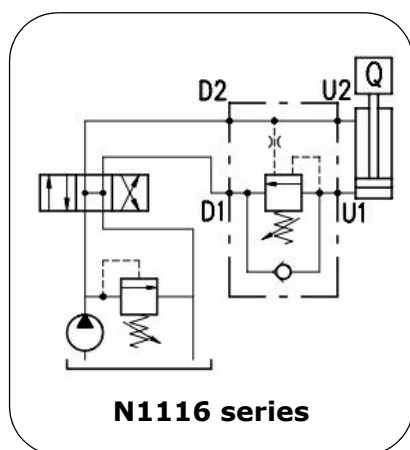
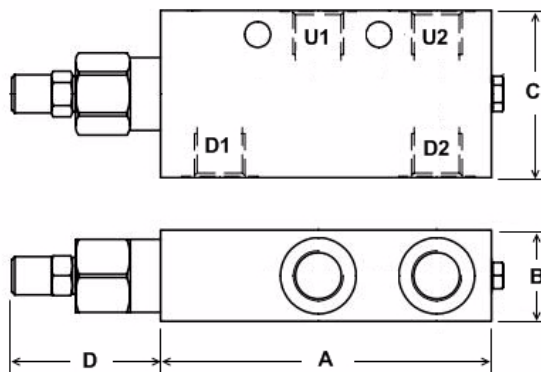
The 1116 series is built with zinc plated steel bodies to ensure a high level of strength and durability. These valves can reach a working pressure of 400 bar.

**N1116 series** - This valve controls a moving load preventing it from moving ahead of the pump and locks the load in any position on U1. It also provides static overload and thermal expansion protection when used in combination with an open centre spool valve. It permits free flow from D1 to U1 and blocks the flow from U1 to D1 until a pilot pressure generated at D2/U2 is sufficient to pilot the U1 port open. This model is sensitive to back pressure on D1 in return mode.

**R1116 series** - As per N1116 but is insensitive to back pressure on D1 in return mode.

**V1116 series** - As per N1116 but has the spring chamber isolated from any system back pressure by a seal and is vented to the atmosphere. It is ideal for use with closed centre spools.

Spring Range Options	
Code	bar
G3	5-210
G5	50-350



Part No. (with G5 spring option)	Ports BSPP	Pilot Ratio	M.W.P. BAR Steel	Dim. (mm)				Nom Flow L/min
				A	B	C	D	
VOSL/N1116-38/G5.P4AC	3/8"	4 : 1	400	109	30	55	43.3	40
VOSL/N1116-12/G5.P4AC	1/2"	4 : 1		109	35	65	43.3	60
VOSL/R1116-38/G5.P4AC	3/8"	4 : 1		109	30	55	51.9	40
VOSL/R1116-12/G5.P4AC	1/2"	4 : 1		109	35	65	51.9	60
VOSL/V1116-38/G5.P4AC	3/8"	4 : 1		109	30	55	50	40
VOSL/V1116-12/G5.P4AC	1/2"	4 : 1		109	35	65	50	60