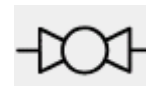


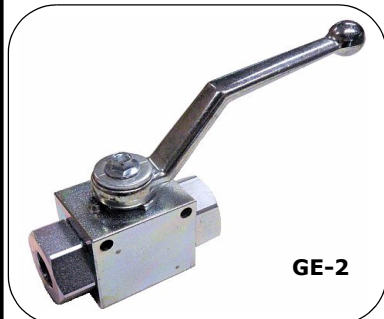
BALL VALVES

GE-2 Series

with Mounting Holes



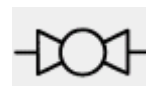
2 PORT MODELS



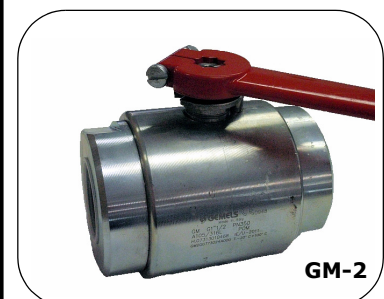
GE-2

Carbon Steel Part No.	PORTS BSPP	M.W.P. bar	BORE mm	Stainless Steel Part No.
GE-2-1/8	1/8"	500	4	-
GE-2-1/4	1/4"	500	6	GE-2-1/4-SS
GE-2-3/8	3/8"	500	10	GE-2-3/8-SS
GE-2-1/2	1/2"	500	13	GE-2-1/2-SS
GE-2-3/4	3/4"	400	20	GE-2-3/4-SS
GE-2-1	1"	350	25	GE-2-1-SS
GE-2-1-1/4R	1 1/4"	350	25	-

GM-2 Series



2 PORT MODELS

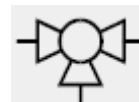
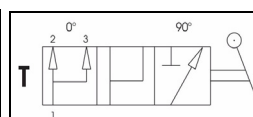
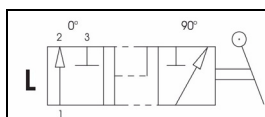


GM-2

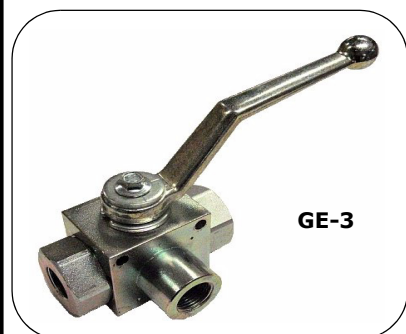
Carbon Steel Part No.	PORTS BSPP	M.W.P. bar	BORE mm
GM-2-1-1/4	1-1/4"	350	32
GM-2-1-1/2	1-1/2"	350	40
GM-2-2	2"	350	50

GE-3 Series

with Mounting Holes



3 PORT MODELS
Carbon Steel

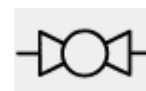


GE-3

L Type Part No.	PORTS BSPP	M.W.P. bar	BORE mm	T Type Part No.
GE-3-1/4-L	1/4"	400	6	GE-3-1/4-T
GE-3-3/8-L	3/8"	400	10	GE-3-3/8-T
GE-3-1/2-L	1/2"	350	13	GE-3-1/2-T
GE-3-3/4-L	3/4"	350	20	GE-3-3/4-T
GE-3-1-L	1"	350	25	GE-3-1-T
GE-3-1-1/4R-L	1-1/4"	350	25	GE-3-1-1/4R-T

VBB Series

Low pressure ball valves suitable for use on suction lines



Standard

Part No.	PORTS BSPP	M.W.P. bar
VBB08	1/4"	25
VBB10	3/8"	25
VBB15	1/2"	25
VBB20	3/4"	25
VBB25	1"	25
VBB32	1 1/4"	25
VBB40	1 1/2"	25
VBB50	2"	25
VBB65	2 1/2"	25
VBB80	3"	25

Lockable

Part No.	PORTS BSPP	M.W.P. bar
VBBD15L	1/2"	25
VBBD20L	3/4"	25
VBBD25L	1"	25
VBBD32L	1 1/4"	25
VBBD40L	1 1/2"	25
VBBD50L	2"	25

