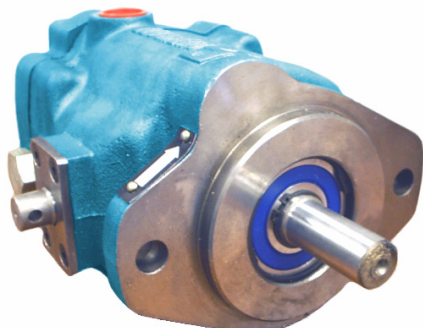


SOUTHCOTT OPEN CIRCUIT PISTON PUMPS



VP Series

PUMPS: Variable delivery open circuit, unidirectional with 2 basic control options; - manual lever and pressure compensator.

Manual lever controlled pumps are useful for those applications which require variable output speeds from an open circuit system. Pressure compensator pumps are commonly used with pressure port closed valving on multifunction systems.

Pressure compensator units are available with remote pressure control and with means for externally adjusting the maximum and minimum displacement.

When used with a minimum displacement limit they are ideal for HIGH-LOW systems for presses etc.

MOTORS: These units can also be used as variable motors in open or closed circuits. The displacement is controlled by a manual lever.

SPECIFICATIONS

| | | |
|--|----------------------------------|---|
| Displacement | 22 = 22 cc/rev 33 = 33 cc/rev | Max. Op. Press = 210 BAR (3000 psi) |
| Pump max. input speed at a negative inlet Pressure of 127mm HG (5" HG) = 2000 rpm | | Compensator = 20 - 100 BAR (290 - 1450 psi) Pressure Ranges = 70 - 210 BAR (1000 - 3000 psi) Max. case press = 3 BAR (45 psi) |
| Pump max. input speed at a positive inlet Pressure of .7 BAR (10 psi) = 3000 rpm | | Mounting = SAE "B" 2 Bolt |
| | | Shaft = 7/8" Keyed = 13 Tooth x 7/8" Spline |
| Motor max. output speed = 3000 rpm | | Weight = 17Kg |

ORDERING CODE

VP - 33 - 1 - C1 - L - R

| |
|------------------------------------|
| Type |
| VP = Variable Pump |
| VM = Variable Motor |
| |
| Displacement |
| 22 = 22 cc/rev |
| 33 = 33 cc/rev |
| |
| Shaft |
| 1 = Keyed 7/8" Parallel |
| 2 = Splined 13 Tooth x 7/8" Spline |

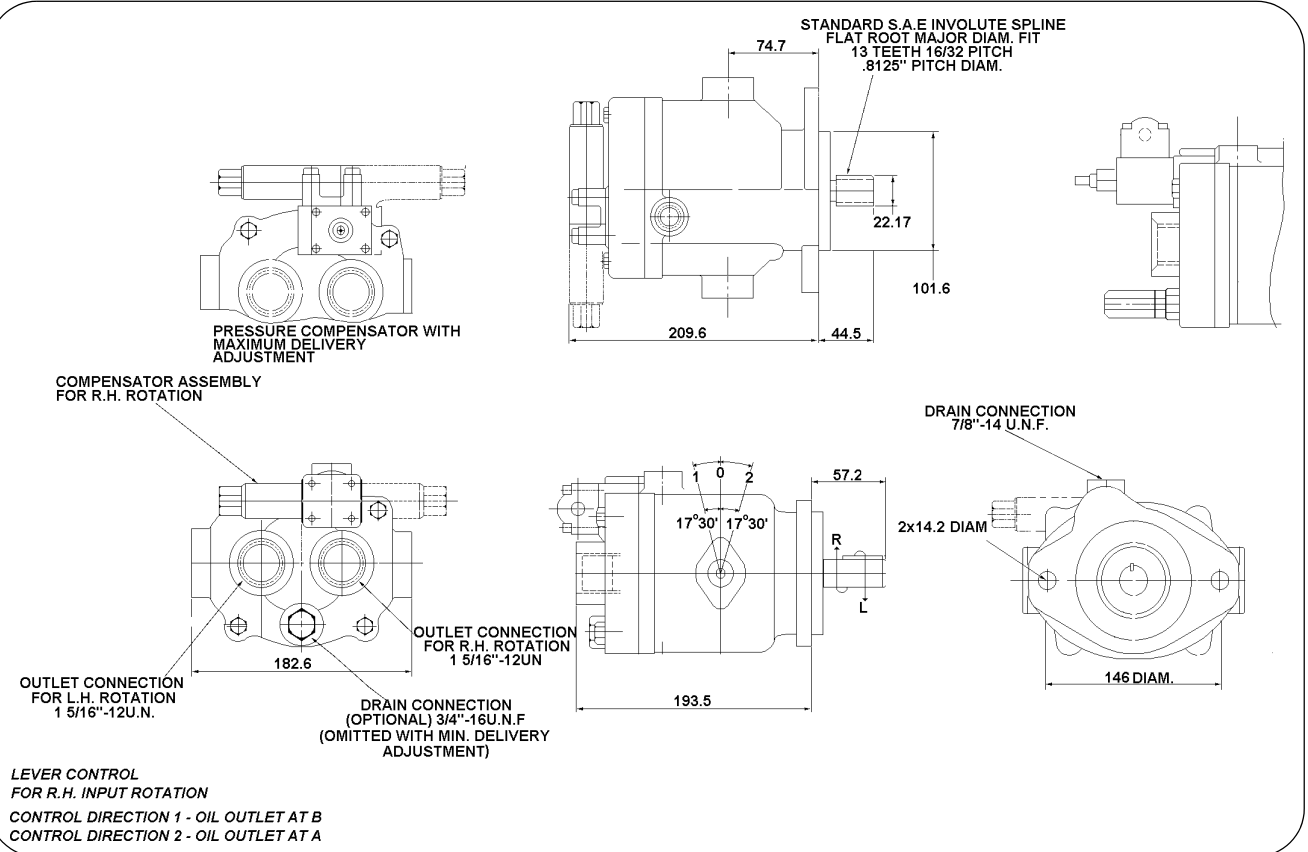
| |
|--|
| Rotation |
| R = Clockwise |
| L = Counter Clockwise |
| |
| Compensator Options |
| H = max. Displacement Adjustment |
| L = Min. Displacement Adjustment |
| (Omit if not required) |
| |
| Displacement Control |
| D = Manual Lever |
| C1 = Pressure Compensator 20 - 100 BAR |
| C2 = Pressure Compensator 70 - 200 BAR |
| CR = Remote Pressure Control |

NB: H or L settings to be also stated at a percentage of full displacement



Variable Displacement Open Circuit Piston Pumps and Motors

PRESSURE COMPENSATED PUMPS



| Type | CONTROL DESCRIPTION | SHAFT | Part No. - Typical |
|-------|---|---------|------------------------|
| Pump | Manual Lever | Keyed | VP-33-1-D-R |
| | | Splined | VP-33-2-D-R |
| Pump | Pressure Compensator | Keyed | VP-33-1-C1-R |
| | | Splined | VP-33-2-C1-R |
| Pump | Pressure Compensator with remote Pressure Control | Keyed | VP-33-1-CR-R |
| | | Splined | VP-33-2-CR-R |
| Pump | Press. Comp. with Max. Displacement | Keyed | VP-33-1-C1-H-R |
| | | Splined | VP-33-2-C1-H-R |
| Pump | Press. Comp. with Min. Displacement (High-Low) | Keyed | VP-33-1-C1-L-R |
| | | Splined | VP-33-2-C1-L-R |
| Pump | Press. Comp. with Max. and Min. Displacement | Keyed | VP-33-1-C1-HL-R |
| | | Splined | VP-33-2-C1-HL-R |
| Motor | Manual Lever | Keyed | VM-33-1-D-B |
| | | Splined | VM-33-2-D-B |
| Lever | Control Lever (not included with pumps) | N/A | 01-240 |