

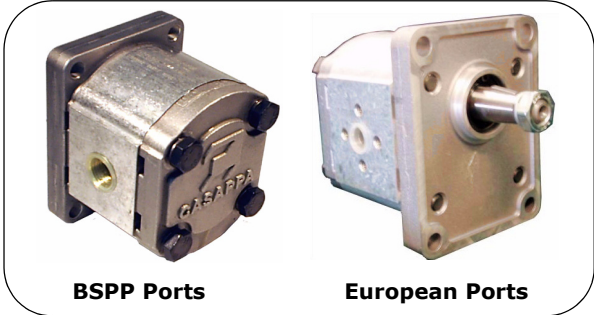
HYDRAULIC GEAR PUMPS

Polaris Series - Group 2

Mount : Euro-Mount

Shaft : 1 in 8 Taper

Ports : Threaded BSPP or European Ports



PLP20 - Group 2 Euro Mount

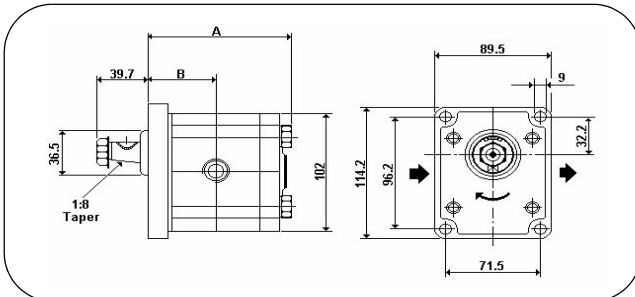
Part No.	DISP. CC/REV	MAX PRESSURE in BAR			MAX SHAFT SPEED	PORTS		DIM in mm					
		P1	P2	P3		IN	OUT	A	B				
PLP20-4D-82E2-GDGD PLP20-4D-82E2-EAEA	4.95	250	280	300	4000	(GD) (EA)	(GD) (EA)	93.0	43.7				
PLP20-6.3D-82E2-GDGD PLP20-6.3D-82E2-EAEA	6.61							95.5	45.0				
PLP20-8D-82E2-GDGD PLP20-8D-82E2-EAEA	8.26							98.0	46.2				
PLP20-9D-82E2-GDGD PLP20-9D-82E2-EAEA	9.17							99.3	46.9				
PLP20-11.2D-82E2-GDGD PLP20-11.2D-82E2-EAEA	11.23				3500	(GE) (EB)	(GD) (EA)	102.5	48.5				
PLP20-14D-82E2-GEGD PLP20-14D-82E2-EBEA	14.53							107.5	51.0				
PLP20-16D-82E2-GEGD PLP20-16D-82E2-EBEA	16.85							3000	111.0	52.7			
PLP20-20D-82E2-GEGD PLP20-20D-82E2-EBEA	21.14								200	220	240	117.5	56.0
PLP20-25D-82E2-GEGD PLP20-25D-82E2-EBEA	26.42								170	190	210	125.5	60.0
PLP20-31.5D-82E2-GEGD PLP20-31.5D-82E2-EBEA	33.03							130	150	170	2000	135.5	65.0

p1 = continuous max. pressure p2 = intermittent max. pressure p3 = peak pressure

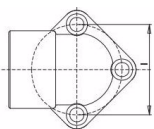
SERIES **PLP20-14 D- 82 E2 - GEGD**

DISPLACEMENT CODE

Rotation Code	Shaft Code	Mount Code	Port Codes	
			BSPP	European
D = Clockwise	82 = 1 in 8 Taper	E2 = Euro Mount	GD = 1/2"	EA = 1/2" Port Adp
S = Counterclockwise			GE = 3/4"	EB = 3/4" Port Adp



Port Adaptors



Type	Dim I	Part No
EA	30mm	RPA1-012
EB	40mm	RPA2-034

MULTIPLE PUMP PRICING
use the price of each single pump plus assembly kit.

Assembly Kit	Inter.Plates
**PLP20/20	86S6
**PLP20/10	51T6
**PLP20/20/20	86S6 + 86S6
**PLP20/20/10	86S6 + 51T6
**PLP20/10/10	51T6 + 88V6