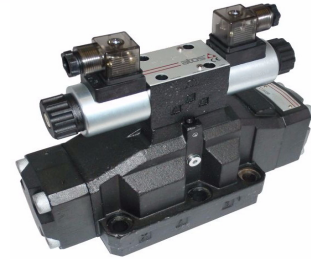


SOLENOID VALVES CETOP 8 DPHE SERIES

Spool Type Valves solenoid pilot operated, wet armature solenoids, 4 way, 2 or 3 position. Suitable for AC AND DC SUPPLY. Standard valves have internal pilot and external drain



CIRCUIT	Part No.	TYPE	Cross Over	MAX PRESSURE BAR			Nom Flow
				P.A.B.X	T	Y	L/Min
	DPHE-4610-12VDC DPHE-4610-24VDC DPHE-4610-230VAC	SPRING CENTRED	-	350	250	0	650
	DPHE-4611-12VDC DPHE-4611-24VDC DPHE-4611-230VAC	SPRING CENTRED	-				650
	DPHE-4613-12VDC DPHE-4613-24VDC DPHE-4613-230VAC	SPRING CENTRED	-				650
	DPHE-4614-12VDC DPHE-4614-24VDC DPHE-4614-230VAC	SPRING CENTRED	-				450
	DPHE-4630/2-12VDC DPHE-4630/2-24VDC DPHE-4630/2-230VAC	SPRING OFFSET	OPEN				600
	DPHE-4631/2-12VDC DPHE-4631/2-24VDC DPHE-4631/2-230VAC	SPRING OFFSET	CLOSED				600

CIRCUIT	Part No.	MAX PRESSURE BAR			Nominal Flow
		P.A.B.X	T	Y	L/Min
	DPHE-4710-12VDC DPHE-4710-24VDC DPHE-4710-230VAC	350	250	0	650
	DPHE-4711-12VDC DPHE-4711-24VDC DPHE-4711-230VAC				650
	DPHE-4713-12VDC DPHE-4713-24VDC DPHE-4713-230VAC				650
	DPHE-4714-12VDC DPHE-4714-24VDC DPHE-4714-230VAC				450

NB: Valve pricing includes cetop 3 pilot valve coils & coil connectors

NB: Nom. flow ratings displayed are with ISO VG 46 Centistokes @ 50°C at 210BAR, for higher pressures the flow must be reduced.

NB: Open centre valves are supplied complete with a back pressure check valve to provide a pilot pressure for spool shift

COILS	
Part No.	Voltage
SP-COE-12DC/10	12DC
SP-COE-24DC/10	24DC
SP-COE-110DC/10	110DC
SP-COE-110/50/60AC/10	110AC
SP-COE-230/50/60AC/10	230AC

COIL CONNECTORS	
Part No.	Type
SP-666	AC or DC Standard
SP-669	AC in rectified to DC
SP-KA-DC	DC Connector with LED
SP-KA-AC	AC Connector with LED

BOLT KITS	
Part No.	
BK-DPHE-3	